

# WELCOME!

## VILLAGE OF WEST PAWLET OPEN HOUSE

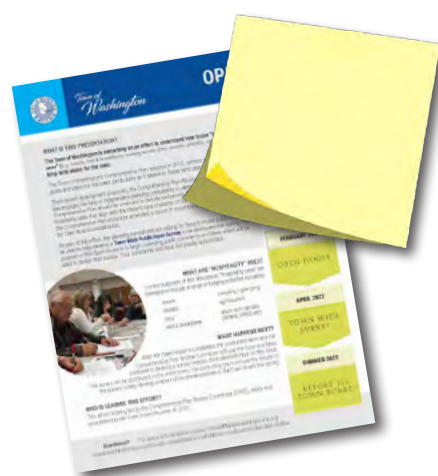
The Town of Pawlet Municipal Planning Grant Committee welcomes you to this presentation, facilitated by our planning consultant.

1



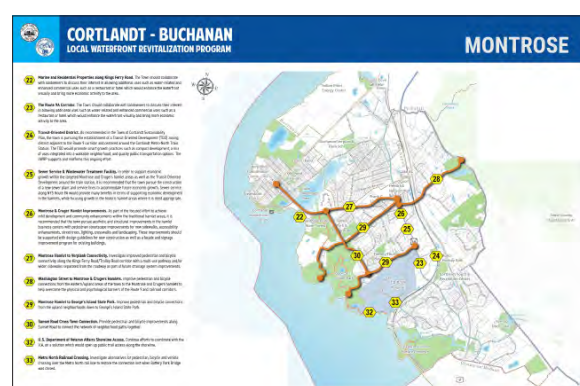
Sign in

2



Grab an Information Sheet and some sticky notes.

3

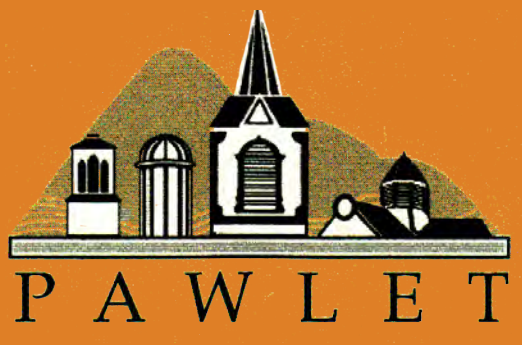


Review the display boards and leave comments with sticky notes.

4



Speak with our consultants and Committee members, ask questions.



## INTRODUCTION

The Town of Pawlet Municipal Planning Grant Committee (MPGC) applied for and was awarded a grant from the Vermont Department of Housing and Community Development through the Rutland Regional Planning Grant Program to develop a Master Plan for the Village of West Pawlet.

A **Master Plan** is a document—often with photos, drawings and maps—which outline the desired future vision and specific goals of the community. It can cover a wide variety of local issues, including but not limited to housing, parking, streetscape improvements, business needs, zoning, recreation, water and sewer services, tourism, industry, youth and senior activities, trail improvements, and many more.

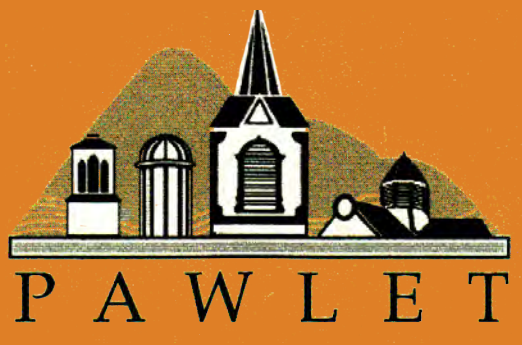
To develop this Master Plan we have planned a series of events, beginning with this Open House, to collect public input and ideas which will be used to shape the plan. These steps are illustrated in the Schedule shown below.

As part of this Open House, the committee and planning consultant are asking for input from the public which will be used to help develop a **Community Survey** to be distributed this summer. The survey results will be used to identify priority topics for Focus Group Meetings in the Fall, with a draft of the Master Plan anticipated to be presented toward the end of the year.

**Your ideas and suggestions are greatly appreciated.**

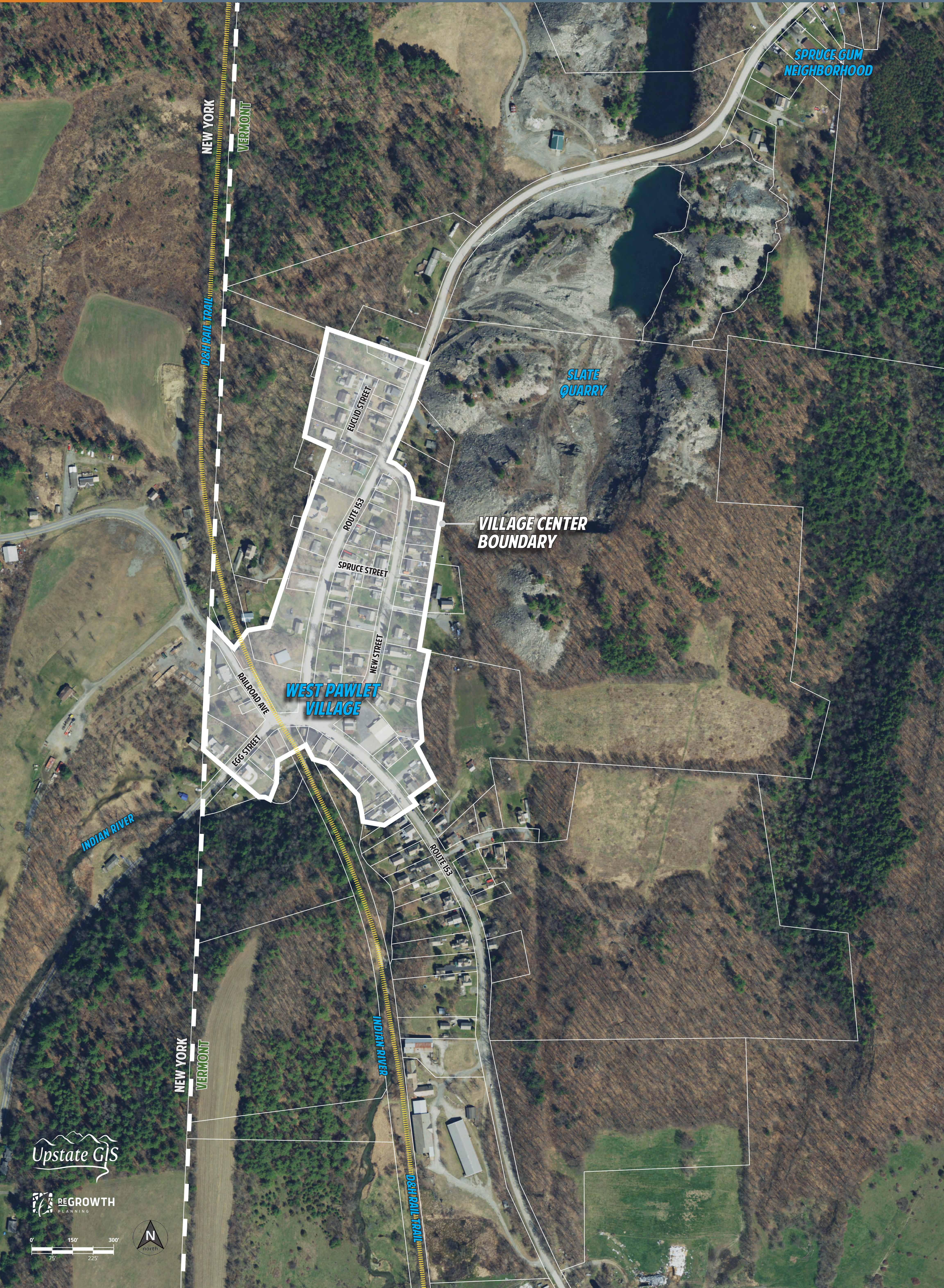
## SCHEDULE





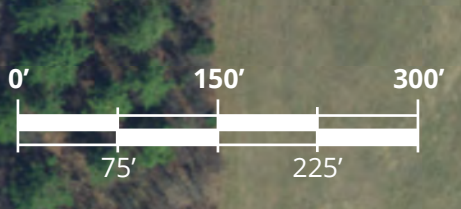
# VILLAGE OF WEST PAWLET MASTER PLAN - OPEN HOUSE

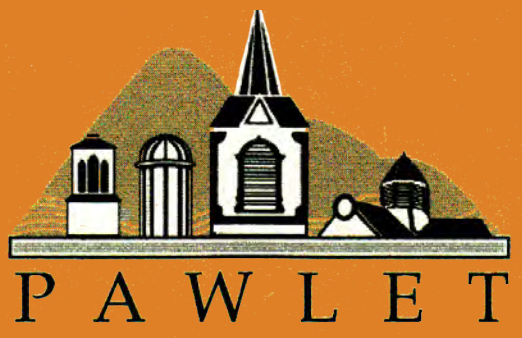
# VILLAGE CENTER & CONTEXT



Upstate GIS

REGROWTH  
PLANNING

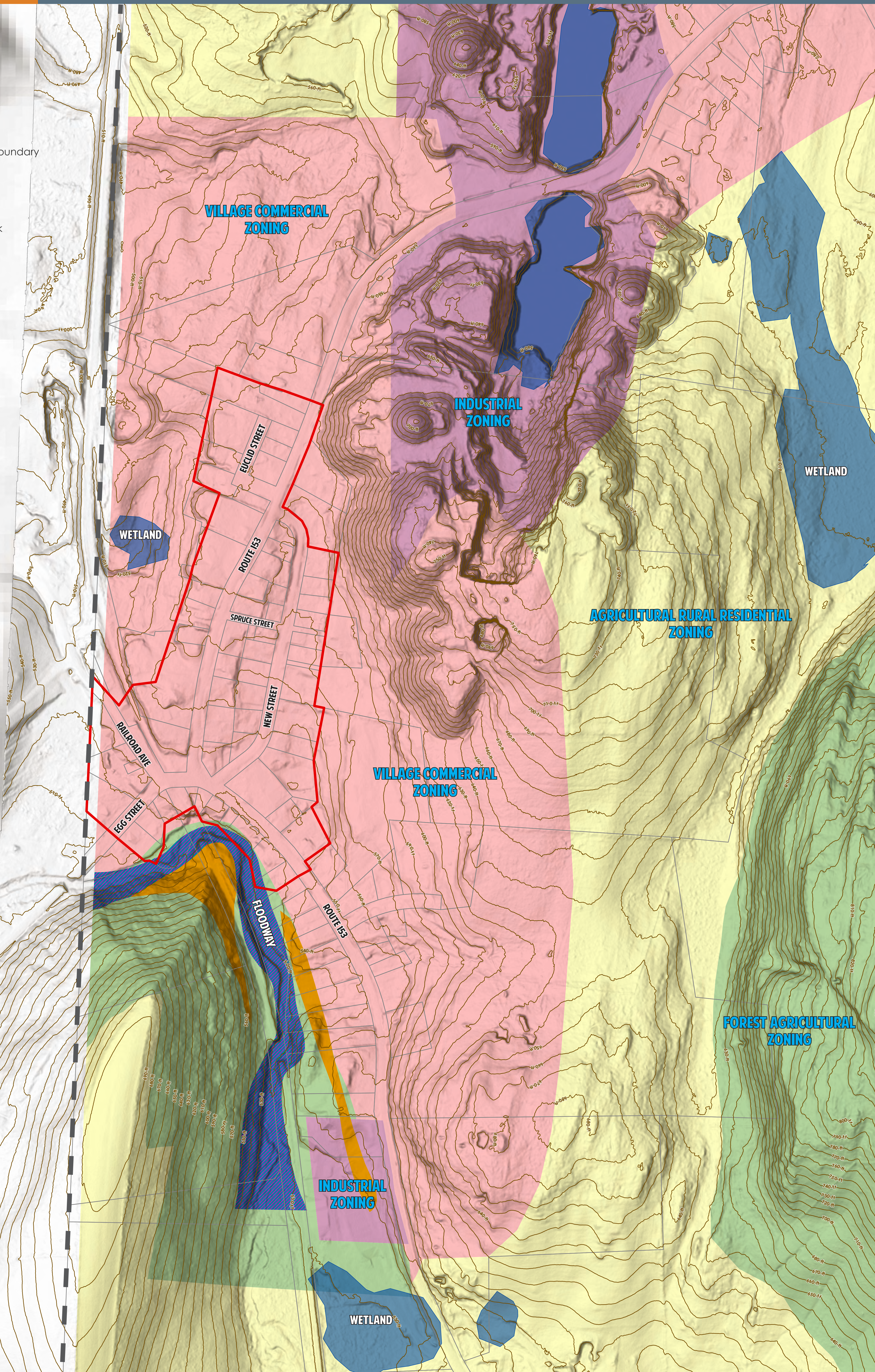




# VILLAGE OF WEST PAWLET MASTER PLAN - OPEN HOUSE

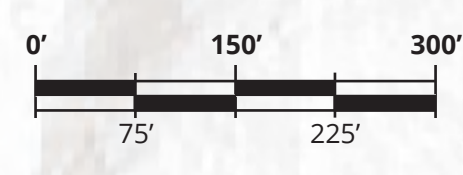
# NATURAL FEATURES & ZONING

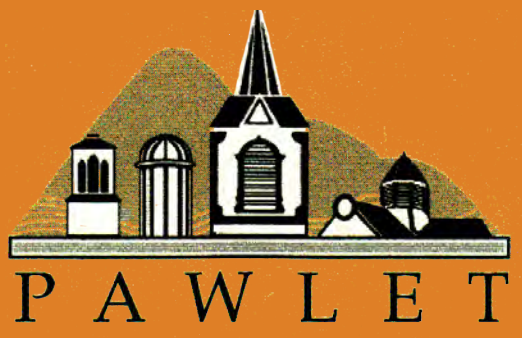
- West Pawlet Village Boundary
- Tax Parcels
- 10-foot Contours
- Wetlands and Ponds
- Floodway
- 0.2% Annual Flood Risk
- Zoning District**
- Forest Agriculture
- Industrial
- Village Commercial
- Agricultural Rural Res.



Upstate GIS

REGROWTH  
PLANNING



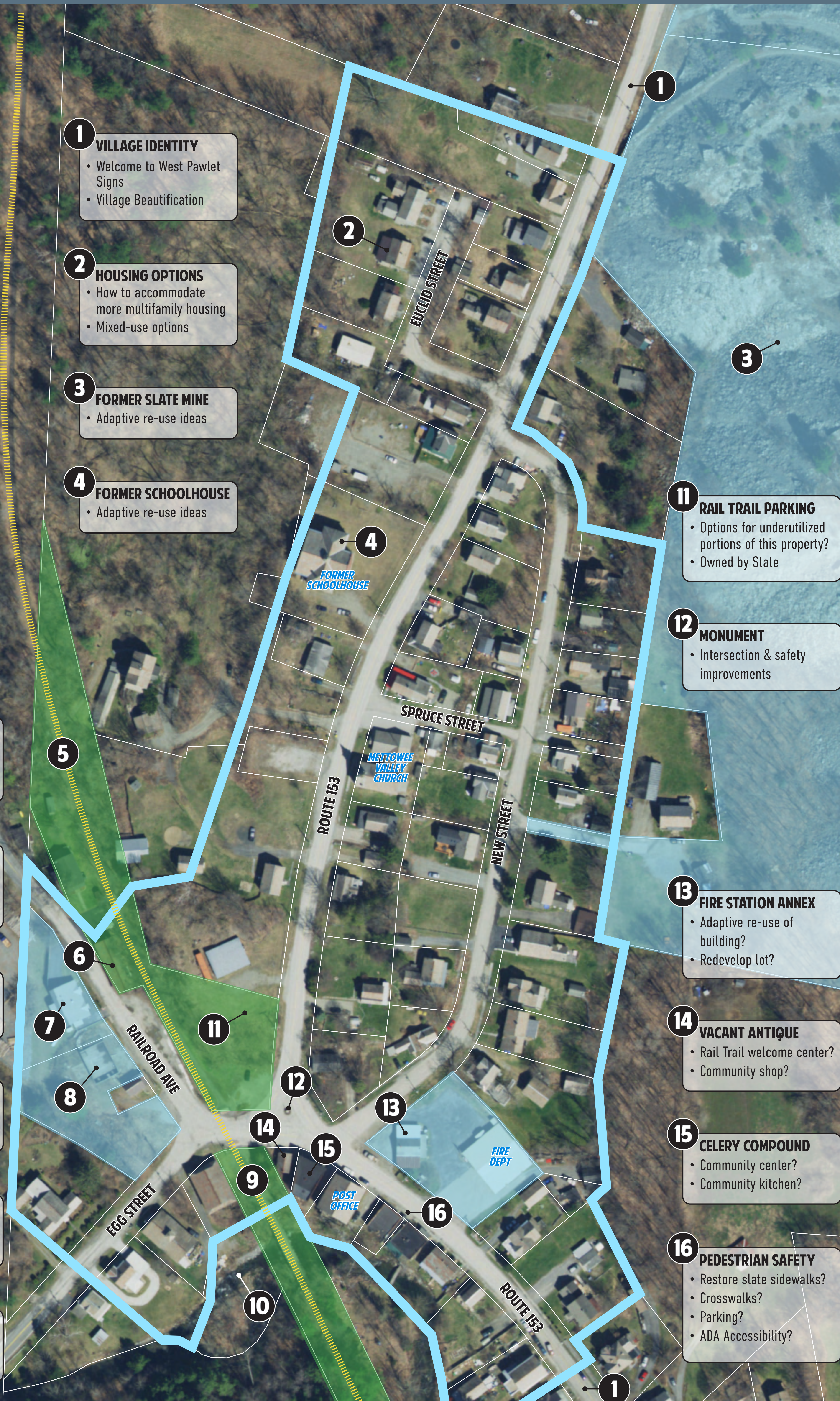


# VILLAGE OF WEST PAWLET MASTER PLAN - OPEN HOUSE

# VILLAGE CENTER QUESTIONS & IDEAS



- MUNICIPAL - TOWN OWNED PROPERTY
- STATE OF VERMONT OWNED PROPERTY



**1 VILLAGE IDENTITY**

- Welcome to West Pawlet Signs
- Village Beautification

**2 HOUSING OPTIONS**

- How to accommodate more multifamily housing
- Mixed-use options

**3 FORMER SLATE MINE**

- Adaptive re-use ideas

**4 FORMER SCHOOLHOUSE**

- Adaptive re-use ideas

**5 RAIL TRAIL**

- Improvements and marketing for tourism
- How to capture visitors

**6 OLD RAILYARD SHED**

- Needs to be removed or relocated
- Adaptive re-use ideas?

**7 SEWER PLANT**

- How to reduce operation costs and sewer fees?

**8 DUTCHIES SITE**

- Redevelopment potential
- New local corner store?

**9 TRAILHEAD**

- Potential improvements
- Outdoor seating / cafe

**10 INDIAN RIVER**

- Potential recreation / trail
- Flooding issues

**11 RAIL TRAIL PARKING**

- Options for underutilized portions of this property?
- Owned by State

**12 MONUMENT**

- Intersection & safety improvements

**13 FIRE STATION ANNEX**

- Adaptive re-use of building?
- Redevelop lot?

**14 VACANT ANTIQUE**

- Rail Trail welcome center?
- Community shop?

**15 CELERY COMPOUND**

- Community center?
- Community kitchen?

**16 PEDESTRIAN SAFETY**

- Restore slate sidewalks?
- Crosswalks?
- Parking?
- ADA Accessibility?